

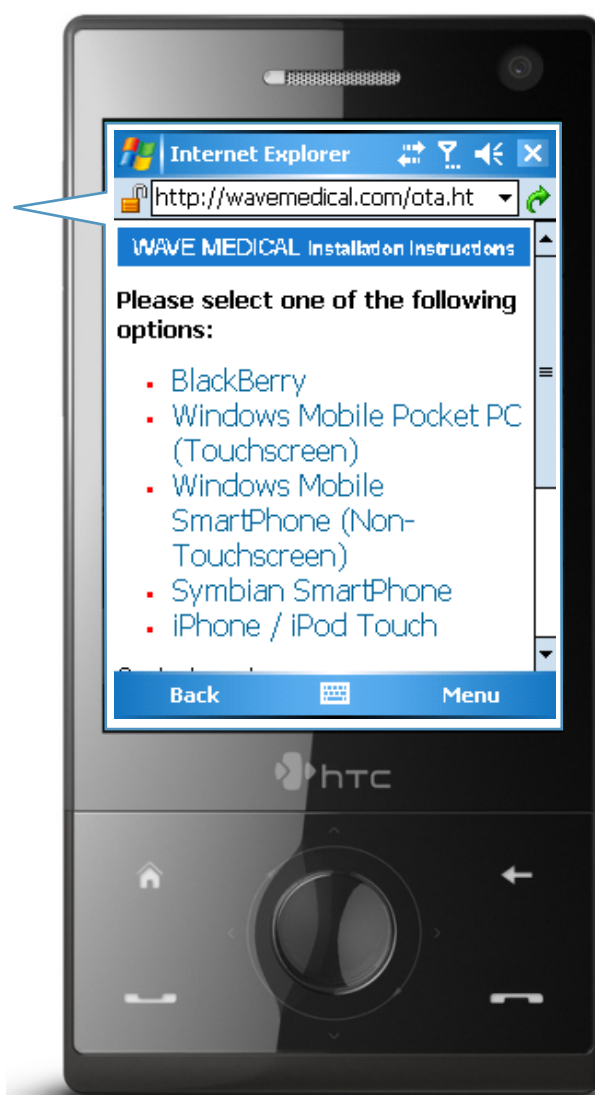
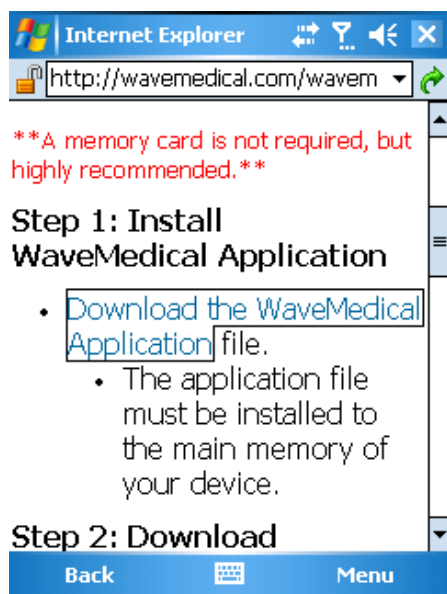


RN Pro Quick Start Guide: Windows Mobile™ Pocket PC

1. Access the following page on your Windows Mobile™ internet browser:
www.WaveMedical.com/ota.htm
****Note: A memory card is not required, but highly recommended.****

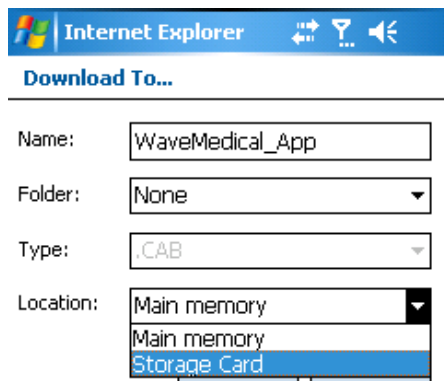
2. Select the **Windows Mobile™ Pocket PC (Touchscreen)** option.

3. Under Step 1, click on **Download the WaveMedical Application File.**

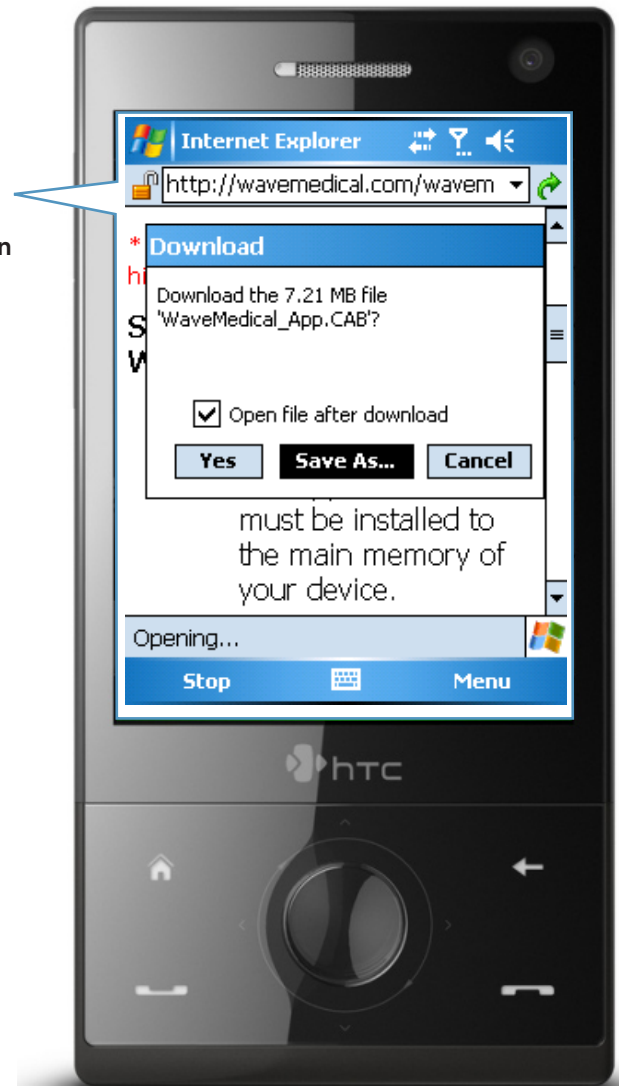
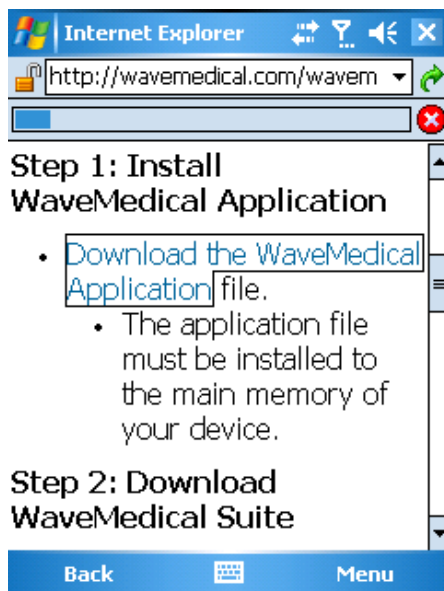


4. You should be presented with a box asking whether you wish to **Download** the file. Make sure the **“Open file after download”** box is checked and select **‘Yes’**.

If you wish to save the application file to your memory card, select **Save As** and select the **Download To Location** as **Storage Card**. Wave Medical suggests you download to a Memory/Storage card.

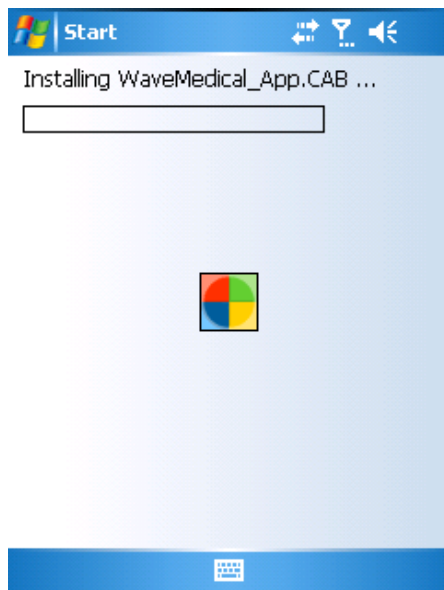


5. When the download begins, you will see the below screen with the status bar at the top that shows you the status of the download.

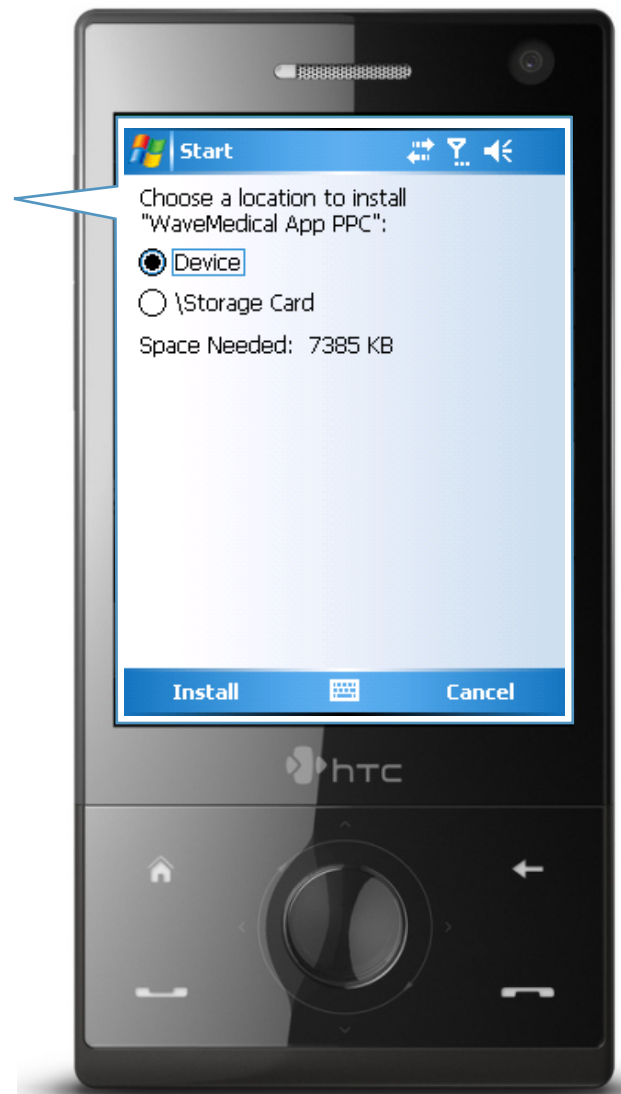
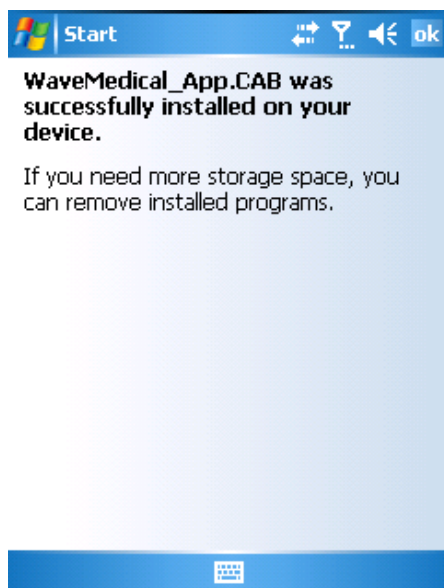


6. When the download is complete, choose to install the Wave Medical application to your **Device**. Then press **Install**.

7. The install will then begin.



8. When the install is complete, you will see the following screen:



DOWNLOAD YOUR WAVE MEDICAL APPLICATION

1. Open **Wave Medical** on your device.
(Start > Programs (applications) > Wave Medical).
Select "**Agree**" after reading the legal box.
2. From the **My Wave Medical Screen**, select the black arrow at the end of the toolbar and then select **Downloads**.



There are no Wave Medical products installed on your device. Please visit www.WaveMedical.com/ota to wirelessly download Wave Medical content.



3. At the account screen, enter your **Wave Medical Username** (email address) and **Password**. Then, press the **Login** button.



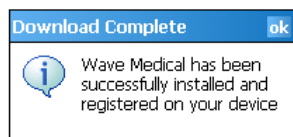
User Name:

Password:



4. On the following screen, you will be presented with your Wave Medical applications. Highlight the application you wish to download and press **Download**.

5. Once the download is complete, you will be presented with a message. Press **Ok**.



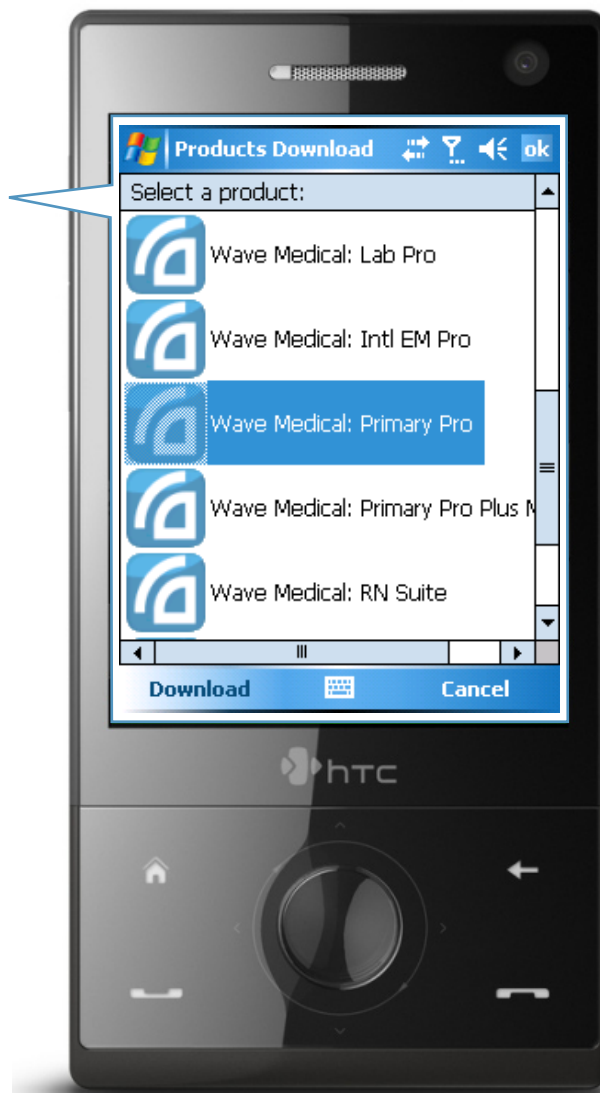
Downloading files 78 of 78



3. You will then be redirected to the **My Wave Medical** screen. Highlight and select your Wave Medical application to begin using the program.



Wave Medical: RN Suite
 Updated: 06/02/2009
 Expires: 05/29/2011
[Register](#)



Should you need any additional assistance, please contact Wave Medical Technical Support:

Email: support@wavemedical.com • Live Chat: <http://www.wavemedical.com/Support.asp>
 Monday thru Thursday: 9:00am – 8:00pm, Friday: 9:00am – 5:00pm,
 Saturday and Sunday: 10:00am – 2:00pm (Central Standard Time)